




Strengthening Voter's Position in Election in the Pandemic Period

Khoirunnisa Nur Agustyati
Perkumpulan untuk Pemilu dan Demokrasi



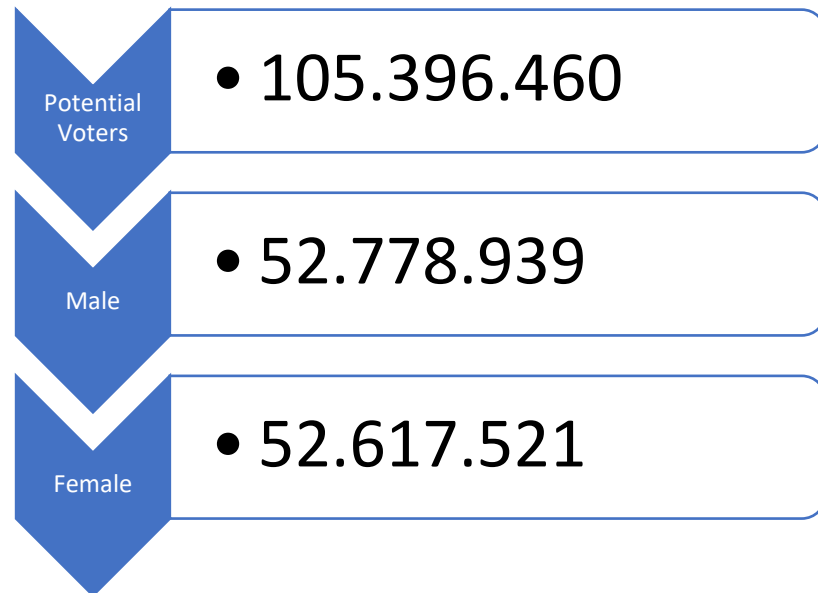
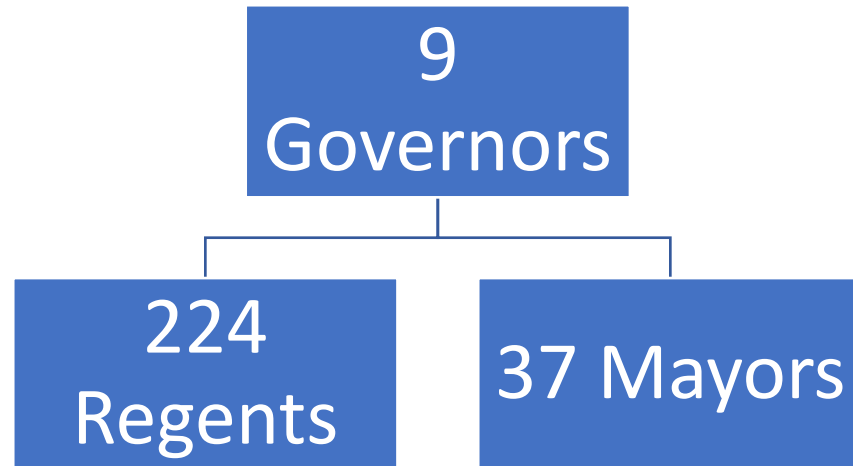
Indonesia 2020 Simultaneous Election



September
23, 2020

December
9, 2020

Indonesia 2020 Simultaneous Election

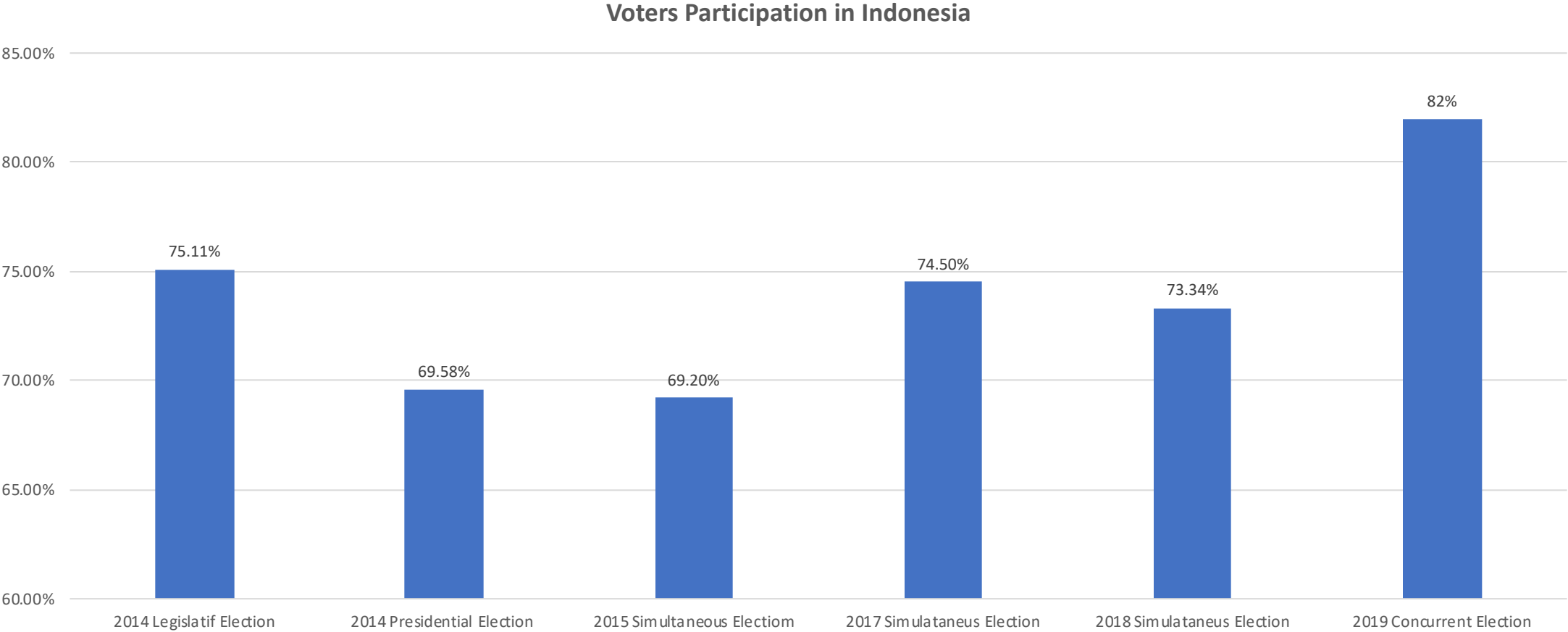


Voter with Disabilities 137.247

- 66.358 (physic)
- 11.938 (blind)
- 19.551 (deaf)
- 19.642 (mentally)
- 6.914 (physic and mental)
- 12.844 (others)

Election = Hope

Voter's Participation in Indonesia Election



Factors of Participations

Regulation

Administrative Factor

Political Factor

The Independency of
EMB

Information

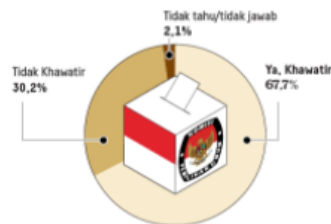
Inclusiveness of Voter
List

Guarantee of Safety
and Healthy

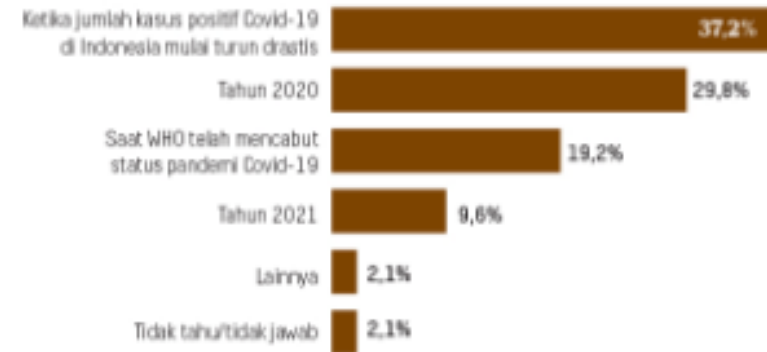
In the Middle of Pandemic, 2020 Simultaneous Election Is Not Priority



Kekhawatiran jika penyelenggaraan pilkada dilakukan di tengah pandemi Covid-19



Jajak Pendapat 4-5 Juni 2020
Kapan sebaiknya tahapan pilkada dilanjutkan?



Metode Penelitian

Ulasan ini berdasarkan tiga kali pengumpulan pendapat secara daring yang dilakukan oleh Litbang Kompas yakni pada 24-25 Maret 2020 dengan 1.315 responden di 27 provinsi dengan representasi = 3,2%. Kemudian pada 22-24 April 2020 dengan 2.057 responden di 33 provinsi dengan representasi = 2,16%. Terakhir pada 4-5 Juni 2020 dengan 1.371 responden di 34 provinsi dengan representasi = 1,34%. Hasil survei diharapkan dapat memengaruhi seluruh pendapat publik sesuai karakteristik daerah asal responden yang berpartisipasi.

Sumber: Litbang Kompas/WIC



Sebanyak 69,2 persen responden memilih pilkada dilaksanakan pada 2021.

Discrimination Faced by Women

Marginalization

Violence Againsts Women

Subordinastion

STEREOTIPE

Double Burden

Problems Faced by Voters with Disabilities

Regulation
Problem

Access to
Information

Physical
Condition

Stigmatization

Strengthening Women and Voter With Disabilities Position in 2020 Simultaneous Election

- The big number of women
- Information access (the candidate's background, the election stage)
- The collaboration with EMBs
- Women and Voter with Disabilities can be part of election observation process

Conclusion

- Elections must not violate the principles of democratic elections and have legal certainty
- It takes time to hold elections in the new normal era
- There is a need for comprehensive risk management for the implementation of the election stages
- Development of a protocol for organizing regional elections that is compatible with the covid-19 handling protocol
- Women and Voter with Disabilities can not be excluded in the election process, especially in the pandemic situation